



Custom Built Rotary Die Cutting Stations

Newart have been providing Die Cutting Solutions to both machine manufacturers and end users for many years with precision built Rotary Die Cutting Stations within a wide range of industries. Our stations have been fitted to machines within the Envelope, Label, Packaging and Medical industries.

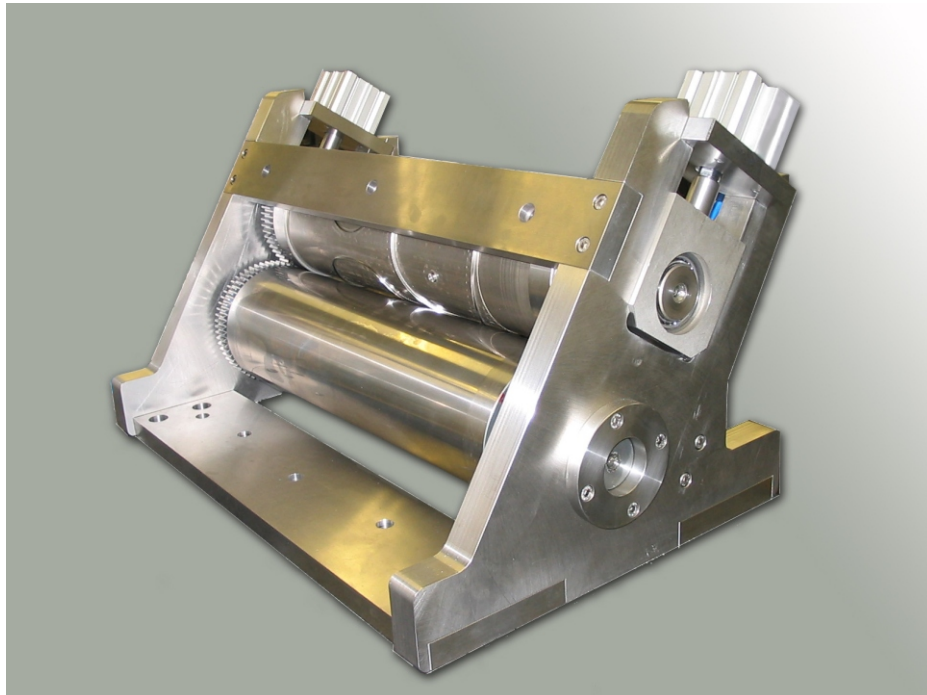
All stations are individually designed by our in-house design team to your exact specification.

We offer stations from 152 - 560mm wide built to your own specification and amongst the options available are servo drive systems, bearerless or gearless cutting, incremental micro adjustment, variable hyperbolic cutting action, gauged hydraulic loading and low inertia hollow cutter and anvils. In addition all our stations are designed to the "cassette principle" to allow for quick die change.

If you would like further information or a visit from one of our sales representatives please contact our sales office on:

+44 (0) 8707 591 650 or sales@newartltd.com

Customer testimonials available upon request.



Newart also offer a full range of Rotary Cutting Cylinders and Magnetic Cylinders.